

**NOTICE OF A REGULAR MEETING  
OF THE BOARD OF DIRECTORS  
MONTGOMERY COUNTY PUBLIC HEALTH DISTRICT**

Notice is hereby given to all interested members of the public that the Board of Directors of Montgomery County Public Health District will hold a regular meeting as follows:

**Date:** Thursday, June 15, 2017

**Time:** 3:30 P.M.

**Place:** MONTGOMERY COUNTY HOSPITAL DISTRICT  
ADMINISTRATIVE BUILDING  
1400 SOUTH LOOP 336 WEST  
CONROE, MONTGOMERY COUNTY, TEXAS 77304

Open to Public: The meeting will be open to the public at all times during which such subjects are discussed, considered, or formally acted upon as required by Texas Open Meetings Act, Chapter 551 of the Government Code.

This Notice in detail was posted at least 72 hours prior to the beginning of said meeting with the County Clerk's Office and is on the Bulletin Board of the Courthouse and in the District's Administrative Office.

**Subject:** The agenda for such meeting shall include the consideration of, and if deemed advisable, the taking of action upon:

1. Call to Order
2. Roll Call
3. Invocation
4. Pledge of Allegiance
5. Public Comments
6. Special Recognition
7. Approval of Minutes from February 16, 2017 Public Health District Regular Board meeting.

**BOARD OF DIRECTORS BRIEFING TO INCLUDE:**

8. Report on activities related to Public Health, Epidemiology and Emergency Preparedness. (Alicia Williams, Manager Public Health - MCPHD)
9. Report on activities related to Medicaid 1115 Waiver Project. (Andrew Karrer, Community Paramedicine)
10. Consider and act on UASI Resolution(s). (Alicia Williams, Manager Public Health – MCPHD)

## **FINANCIAL MATTERS**

11. Receive and approve financial report regarding District's operations. (Brett Allen, CFO - MCPHD)
12. Consider and act upon recommendation for amendment (s) to the budget for fiscal year ending September 30, 2017. (Brett Allen, CFO – MCPHD)
13. Consider and act on ratification of payment of invoices related to expenditures. (Brett Allen, CFO – MCPHD)

## **ADMINISTRATIVE MATTERS**

14. Consider and act discussion of items to be placed on agenda of the next meeting of the Montgomery County Public Health District Board of Directors.
15. Adjourn

**MINUTES OF A REGULAR MEETING  
OF THE BOARD OF DIRECTORS  
MONTGOMERY COUNTY PUBLIC HEALTH DISTRICT**

The regular meeting of the Board of Directors of Montgomery County Public Health District was duly convened at 3:30 p.m., February 16, 2017, in the Administrative offices of the Montgomery County Hospital District, 1400 South Loop 336 West, Conroe, Montgomery County, Texas.

**1. Call to Order**

Meeting called to order at 3:30 p.m.

**2. Roll Call**

**Board Members Present**

Dr. Don Stockton, Conroe Independent School District, Acting Chairman  
Sandy Wagner, Montgomery County Hospital District, Treasurer  
Craig Doyal, Montgomery County Judge  
Mayor Lynn Scott, City of Panorama Village  
Duke Coon, City of Conroe

**Non-Voting Members present:**

Randy Johnson, Montgomery County Public Health District, Executive Director  
Dr. Charles Sims, MD, Medical Director for Public Health District

**3. Invocation**

Led by Mr. Coon

**4. Pledge of Allegiance**

Led by Dr. Stockton

**5. Public Comments**

There were no comments from the public.

**6. Acknowledgement of our new and reappointed board members to the Public Health District board.**

Mr. Randy Johnson welcomed back returning board member Mayor Lynn Scott of the City of Panorama Village and also welcomed new board member Craig Doyal, Montgomery County Judge.

**7. Consider and act on appointment of annual chair positions.**

Mayor Scott made a motion to nominate Judge Craig Doyal for Chairman. Mrs. Wagner offered a second and motion passed unanimously.

Mrs. Wagner made a motion to nominate Dr. Don Stockton for Vice-Chairman. Mayor Scott offered a second and motion passed unanimously.

Dr. Stockton made a motion to nominate Mrs. Sandy Wagner for Secretary/Treasurer. Mr. Coon offered a second and motion passed unanimously.

**8. Approval of Minutes from November 3, 2016 Public Health District Regular Board meeting.**

Dr. Stockton made a motion to approve the minutes from the November 3, 2016 Public Health District Regular Board meeting. Mrs. Wagner offered a second and the motion passed unanimously.

**9. Report on activities related to Public Health, Epidemiology and Emergency Preparedness. (Alicia Williams, Manager Public Health - MCPHD)**

Mrs. Melissa Miller, COO presented a report to the board.

**10. Report on activities related to Medicaid 1115 Waiver Project. (Andrew Karrer, Community Paramedicine) (attached)**

Mrs. Melissa Miller, COO presented a report to the board.

**11. Receive and approve financial report regarding District's operations. (Brett Allen, CFO MCHD)**

Mr. Brett Allen, CFO presented financial report regarding District's operations to the board.

Dr. Stockton made a motion to accept and approve financial report regarding District's Operations. Mr. Coon offered a second and motion passed unanimously.

**12. Consider and act on ratification of payment of invoices related to expenditures. (Brett Allen, CFO – MCHD) (attached)**

Mayor Scott made a motion to approve ratification of payment of invoices related to expenditures. Dr. Stockton offered a second and motion passed unanimously.

**13. Discussion of items to be placed on agenda of the next meeting of the Montgomery County Public Health District Board of Directors.**

- MCHD and the Public Health department are working together providing Car Seat Inspections every Wednesday on the MCHD campus.
- CPR training module/machine has been purchased by MCHD and Mr. Randy Johnson discussed and requested advice from the Public Health board members. The district would like to have input from board members on where the most value of deploying this training device to the public would be so the community could train and benefit from this device.
- Discussed recent food borne illness and advised that the Public Health department is investigating in Montgomery County and at this time no conclusive results back from the lab reports.
- June 15, 2017 is the next scheduled Montgomery County Public Health District board meeting.

**14. Adjourn**

Meeting adjourned at 4:04 p.m.

# Agenda Item # 8

To: MCPHD Board of Directors

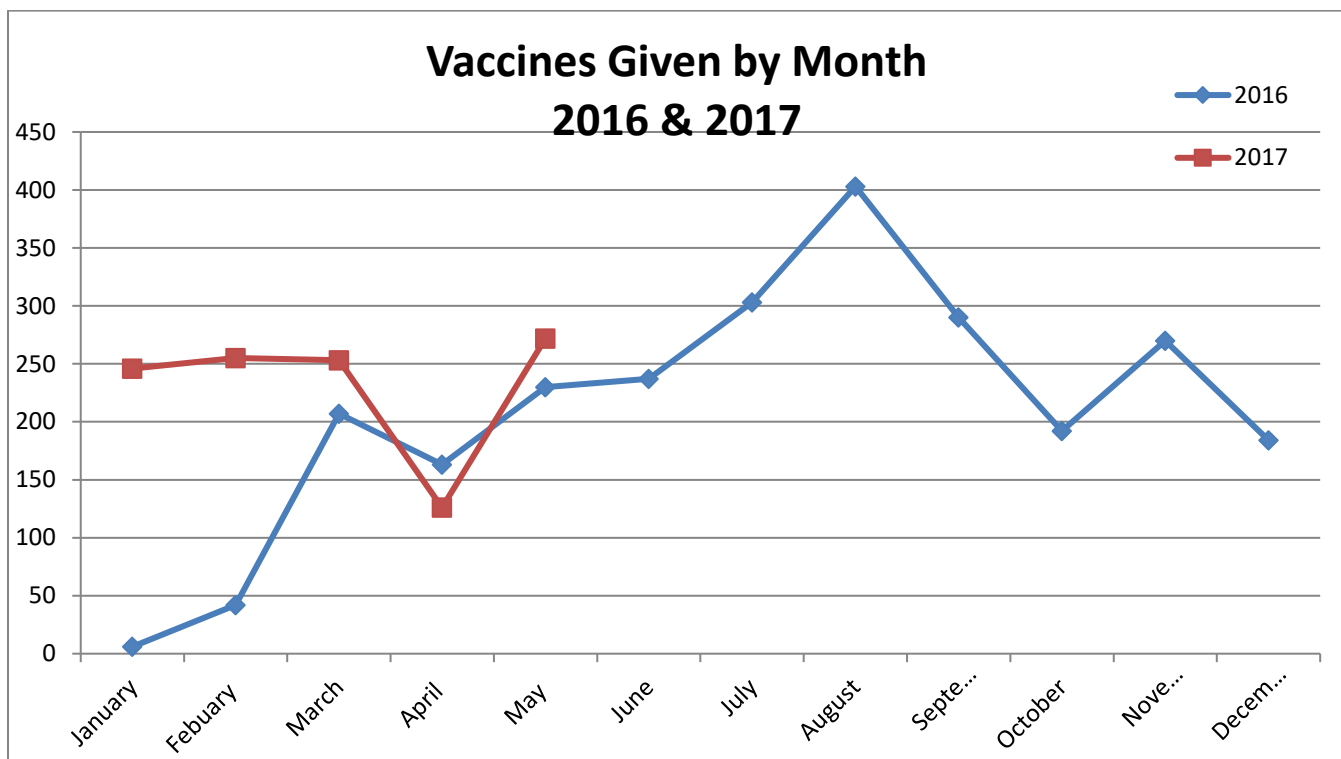
From: Alicia Williams

Date: June 15, 2017

Re: Public Health Clinic, Epidemiology, Emergency Preparedness, and MRC

## Immunization Program:

The immunizations per month are higher this year than last. In April, the state was delayed in processing vaccine orders which decreased our vaccines on hand limited the number of clients we could immunize. The summer is expected to bring on an influx of “back-to-school” clients. From January to May, the clinic collected \$4,671.97 from Medicaid for Texas Vaccines for Children (TVFC) vaccinations.



## Sexually Transmitted Infection/Disease Program:

MCPHD provides screenings for Chlamydia, Gonorrhea, Syphilis, and HIV. Treatment follows our signed standing delegation orders based on CDC treatment guidelines. The following chart has the number of appointments and patients treated in each category.

Month	Appts Kept	Treatment provided	Syphilis	Gonorrhea (GC)	Chlamydia	HIV	Notes:
May-16	26	10	4	2	5	0	One patient received both GC and CT treatment.
Jun-16	31	5	0	5	1	0	One patient received both GC and CT treatment.
Jul-16	25	6	3	2	2	0	One patient received both GC and CT treatment.
Aug-16	24	4	1	0	3	0	
Sep-16	41	11	2	2	8	1	One patient received both GC and CT treatment.
Oct-16	32	6	2	1	3	0	
Nov-16	29	7	0	0	7	0	
Dec-16	37	12	5	2	5	0	
Jan-17	20	2	1	0	1	0	
Feb-17	29	9	2	3	7	0	3 patients treated for CT/GC
Mar-17	44	16	5	4	10	0	3 patients treated for both CT/GC
Apr-17	24	5	1	0	4	0	
May-17	33	9	4	1	4	0	

## TB Program:

### Outreach and Education

Outreach and education activities included presentations at Infection Control meetings, case managers at hospitals, congregate settings such as jails, mental health facilities, group homes, etc. Recently, we have reached out to first responders such as EMS and the fire department to address exposure concerns and information about screening and treatment.

### Treatment and Case Management

January to May 2017:

So far in 2017, we have had 81 referrals for TB assessment. The TB program received 6 new cases so far this year. Currently, MCPHD is working with 8 patients with active TB that will need active treatment for TB for 9-12 months. They will have a directly observed therapy (DOT) worker go to their homes for the duration of their treatment 5 days a week to watch them take their medication. They come in to the public health department at least once a month for evaluation including lab and x-ray. The case manager orders all their medications from the state and prepares it for the DOT workers. These medicines can be very toxic and require close monitoring. Most all of our active TB cases also

have other complex issues including cancer, autoimmune disease, poverty, uninsured, no transportation and lack of social support network.

Latent tuberculosis infection (LTBI) is a state of persistent immune response to stimulation by Mycobacterium tuberculosis antigens without evidence of clinically manifested active TB. These patients have been infected with the Tuberculosis germ but do not have active TB. They generally require 3-4 months of medications; some which are required to be given by DOT. They also require monthly assessments. It is much more cost effective to treat people who have been exposed vs. treating active TB. Currently, fifteen cases are being treated for latent TB.

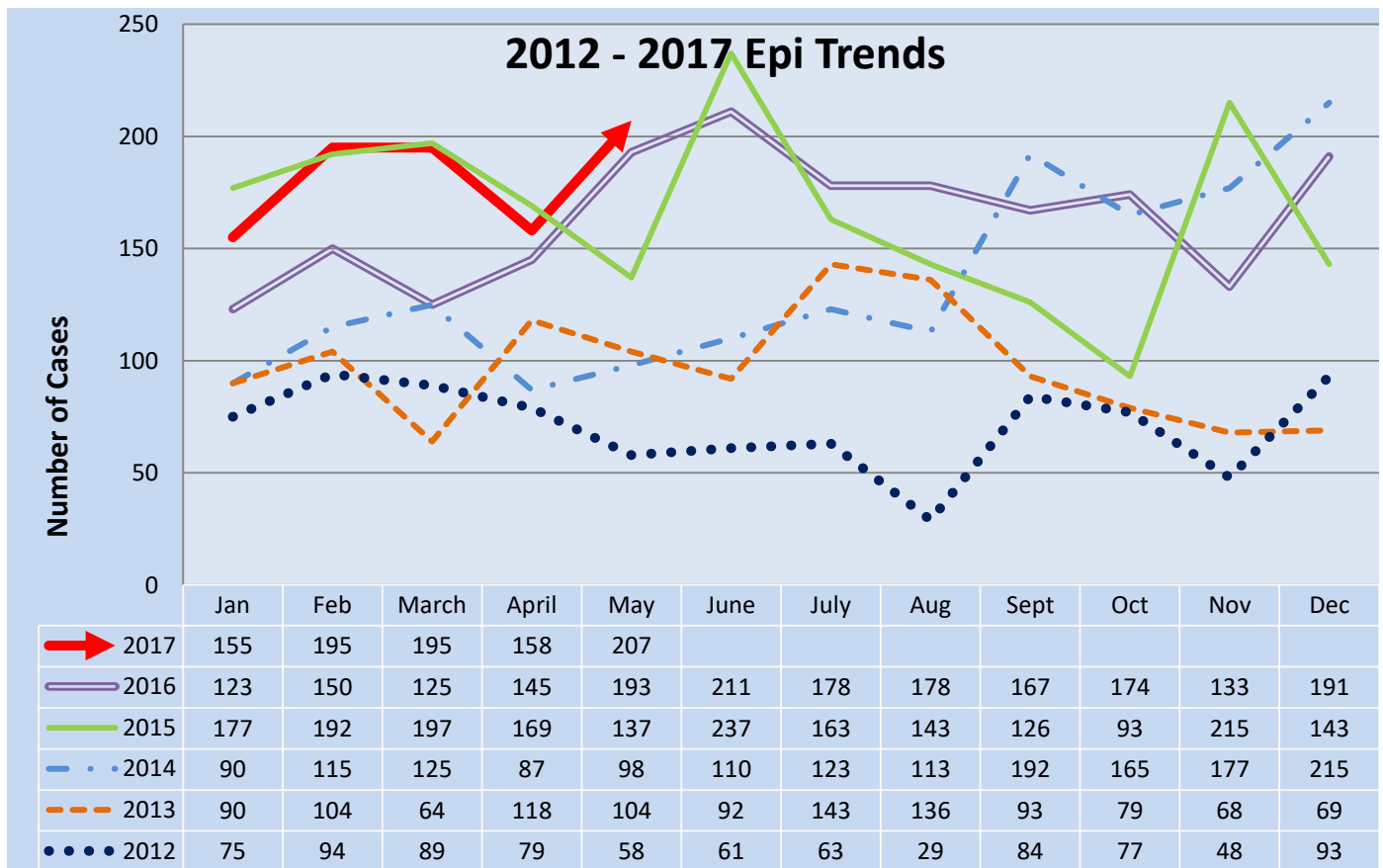
Electronic Disease Notifications are referrals from immigration. We have had 12 EDN cases worked up this year. We are notified by immigration that someone from another country has arrived in our county, and there are concerns about TB symptoms or TB exposure. It is our responsibility to locate and assess these immigrants. Many of these referrals have had BCG vaccination, usually done in infancy in foreign countries, which can cause a false positive skin test. Through reliable screening, treatment for false positive skin tests can be eliminated. Some referrals are cleared and released. Some are treated. When the process is completed, we fill out a form that goes back to immigration and the state public health department describing what was done and status of immigrant.

Thirty patients are in the screening process as contact cases. They are known to have been in contact with someone who has active TB or suspected TB.

## **Epidemiology Program**

- January
  - On 1/30/17 we were notified by Montgomery County Environmental Division that 39 individuals whom attended a tennis banquet at a country club in The Woodlands on 1/17/2017 reported GI illnesses.
  - We established the president of the Tennis League as our point of contact. The president was able to expedite the process of disseminating Public Health recommendations to the entire group. We recommended individuals: see their physician if still experiencing GI symptoms, send laboratory results to MCPHD, and to maintain proper hand washing techniques.
- February
  - We requested that Montgomery County Environmental Division take water samples from the country club that hosted the tennis banquet. The water testing resulted negative any organism.
    - Montgomery County Environmental Division investigated the vendors that prepared/supplied the food served and found no recalls. The Montgomery County Environmental Division was unable to take sample from the food served because the banquet occurred on 1/17/2017 and the illnesses were reported 1/30/2017.
  - We sought recommendations and provided situations updates to DSHS Region 6/5S, DSHS Austin, regional health departments, Montgomery County Health Authority, and the City of Houston Laboratory.
  - We sent out a food borne questionnaire to all 200 attendees and 78 individuals responded.
    - No positive laboratory results have been reported.
    - No significant differences between food eaten and becoming ill were identified.
- March
  - On 3/8/2017 we were reported a positive case of N. meningitidis. We performed an investigation immediately and were able to get prophylactic treatment to the close contacts as soon as possible.

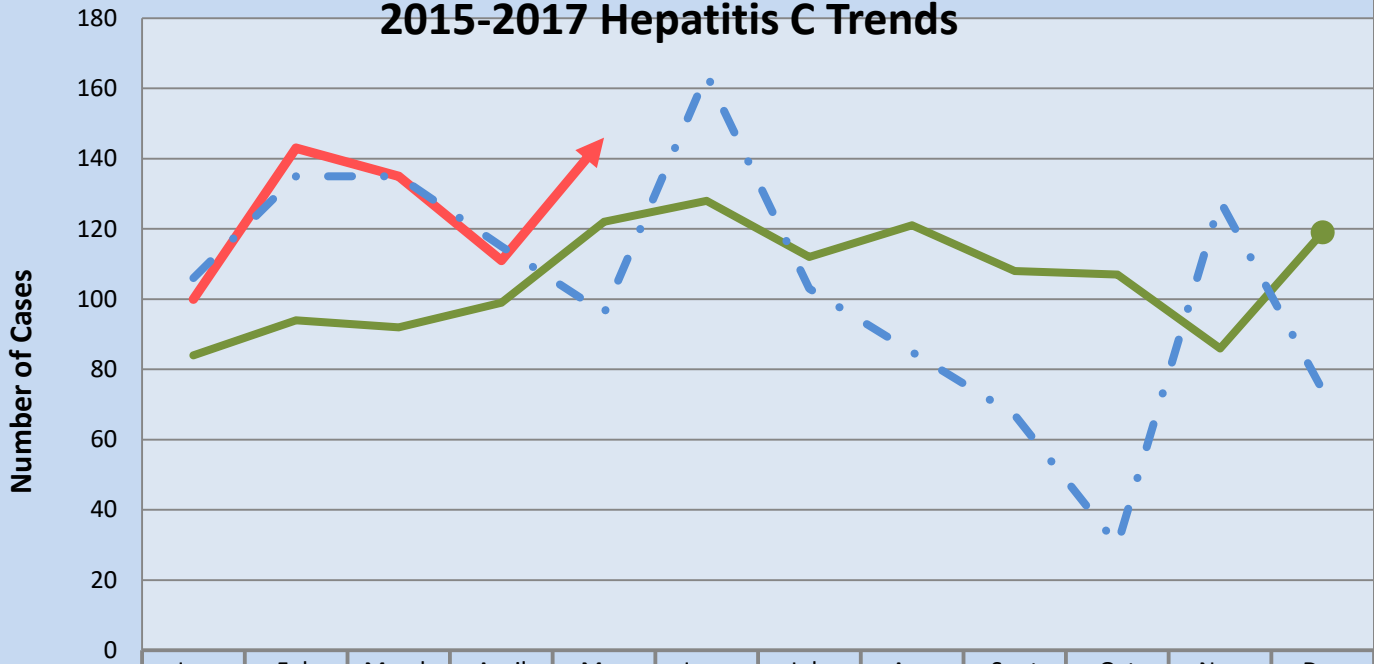
- During this month, we orchestrated an Infection Control Practitioners meeting at Conroe Regional Medical Center.
  - We also attended a quarterly Epi/BT meeting in Houston where we presented our Tennis Banquet illness investigation.
  - We have been investigating and performing track back investigations on a possible positive Zika Virus blood donor.
- April
    - Epidemiology staff member attended a Zika Boot Camp hosted by Cameron County.
    - Epidemiology staff member attended a Foodborne Outbreak Conference hosted by DSHS Austin.
    - Epidemiology staff attended a Legionella Workshop hosted by Harris County Public Health. CDC Legionella experts educated attendees by presenting case investigations they have been involved with.
  - May
    - Epidemiology staff member attended a Zika Birth Defect Symposium in Houston.
    - Epidemiology staff member and Public Health Manager went to local providers to educate on disease reporting.



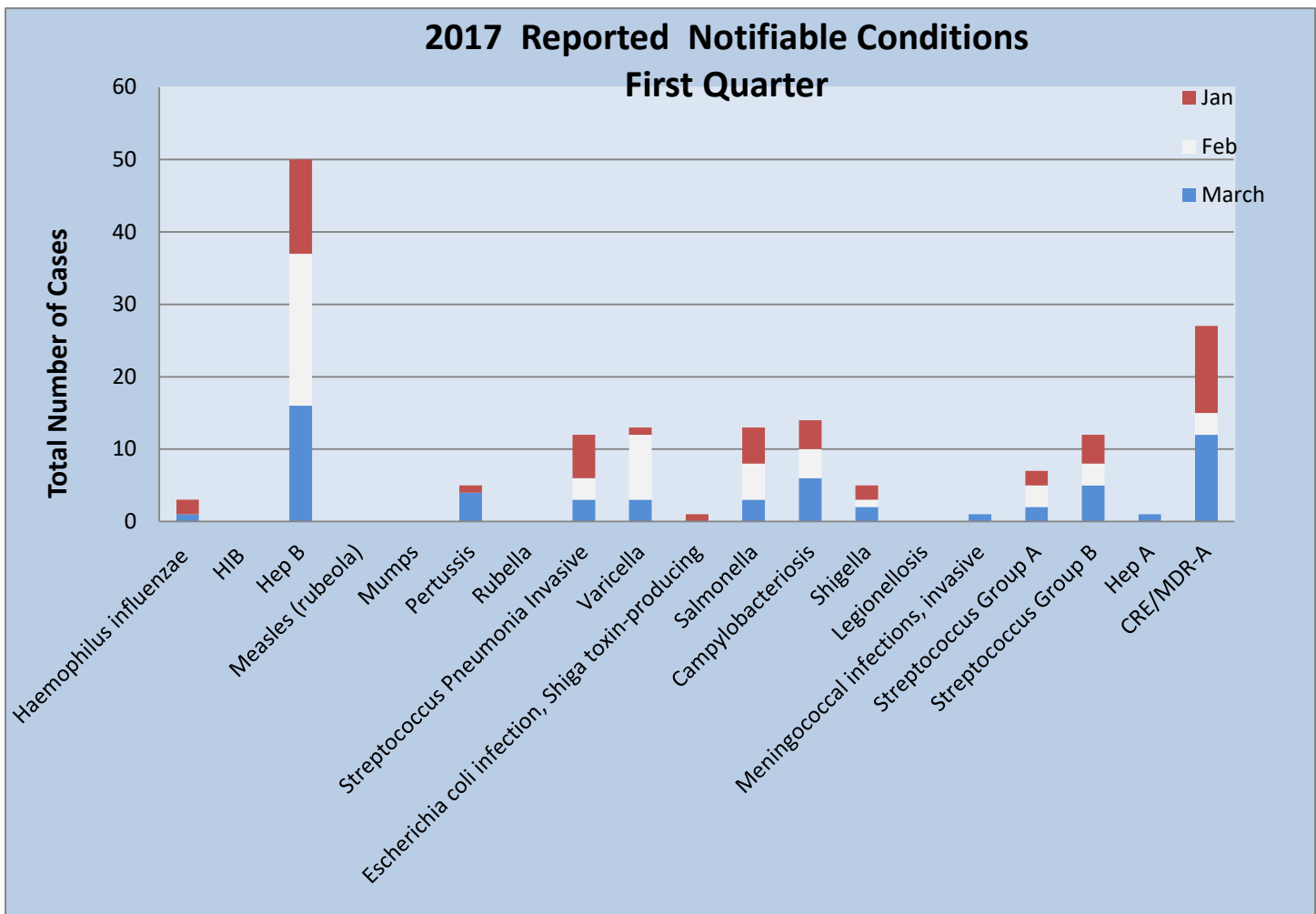
**Total number of cases reported continues to grow. This can be due to the growth in our county population and/or better information sharing with the local hospitals and clinics.**



## 2015-2017 Hepatitis C Trends

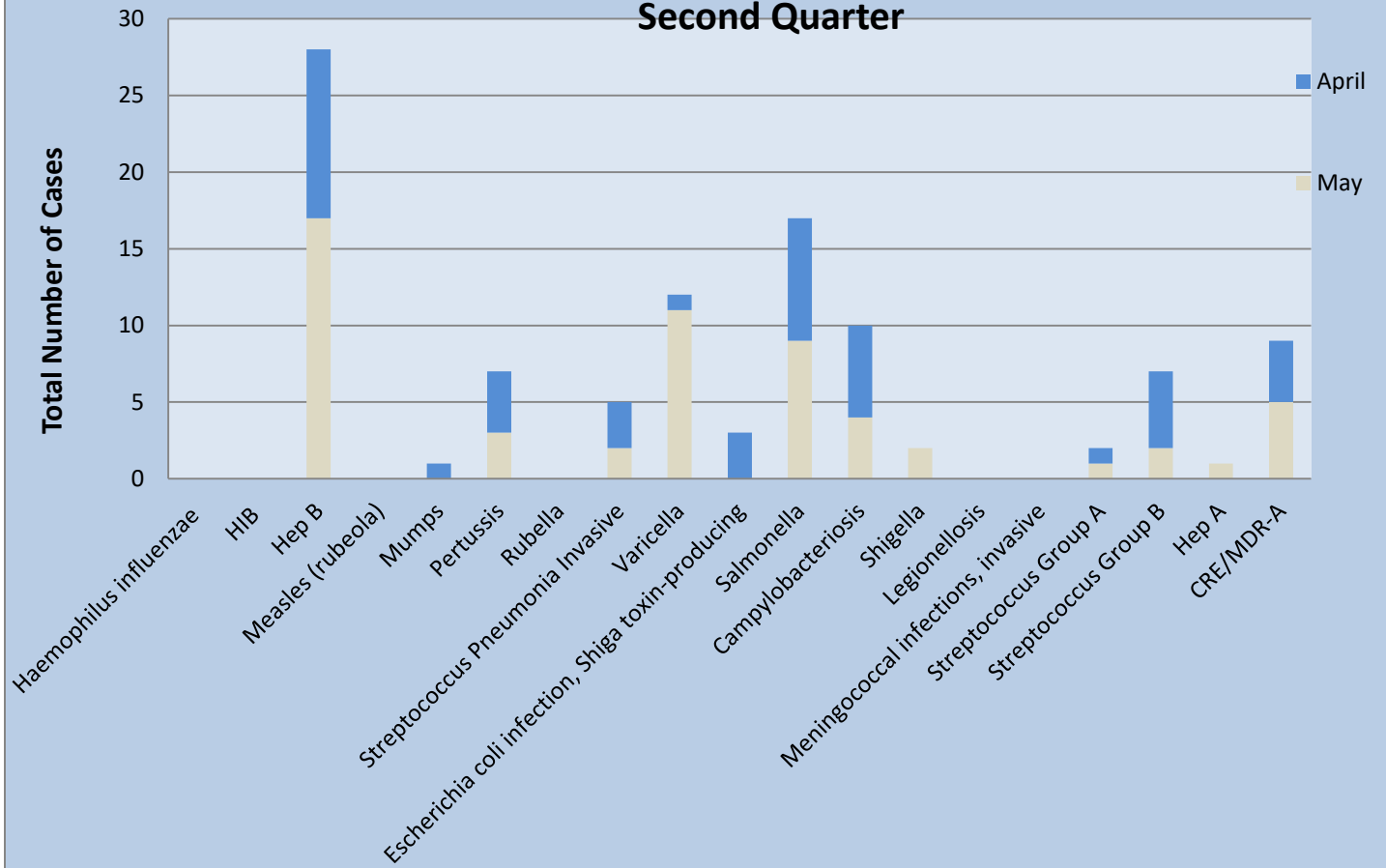


	Jan	Feb	March	April	May	June	July	Aug	Sept	Oct	Nov	Dec
<span style="color: red;">➔</span> 2017	100	143	135	111	146							
<span style="color: green;">●</span> 2016	84	94	92	99	122	128	112	121	108	107	86	119
<span style="color: blue;">•</span> 2015	106	135	135	115	96	164	103	85	67	30	128	74



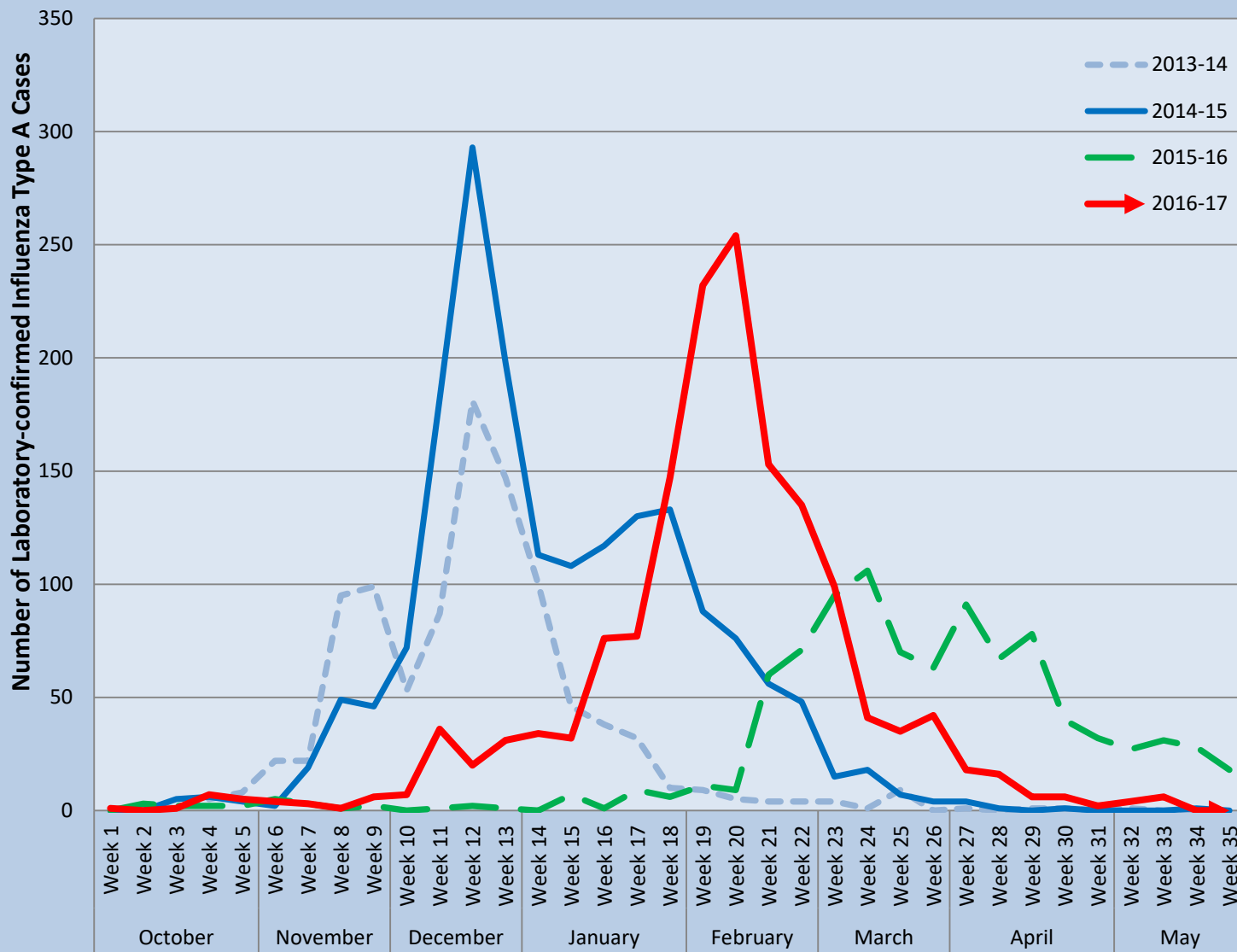
Cases investigated by MCPHD; Zoonosis cases are investigated by the state (Rabies, Zika, WNV)

## 2017 Reported Notifiable Conditions Second Quarter

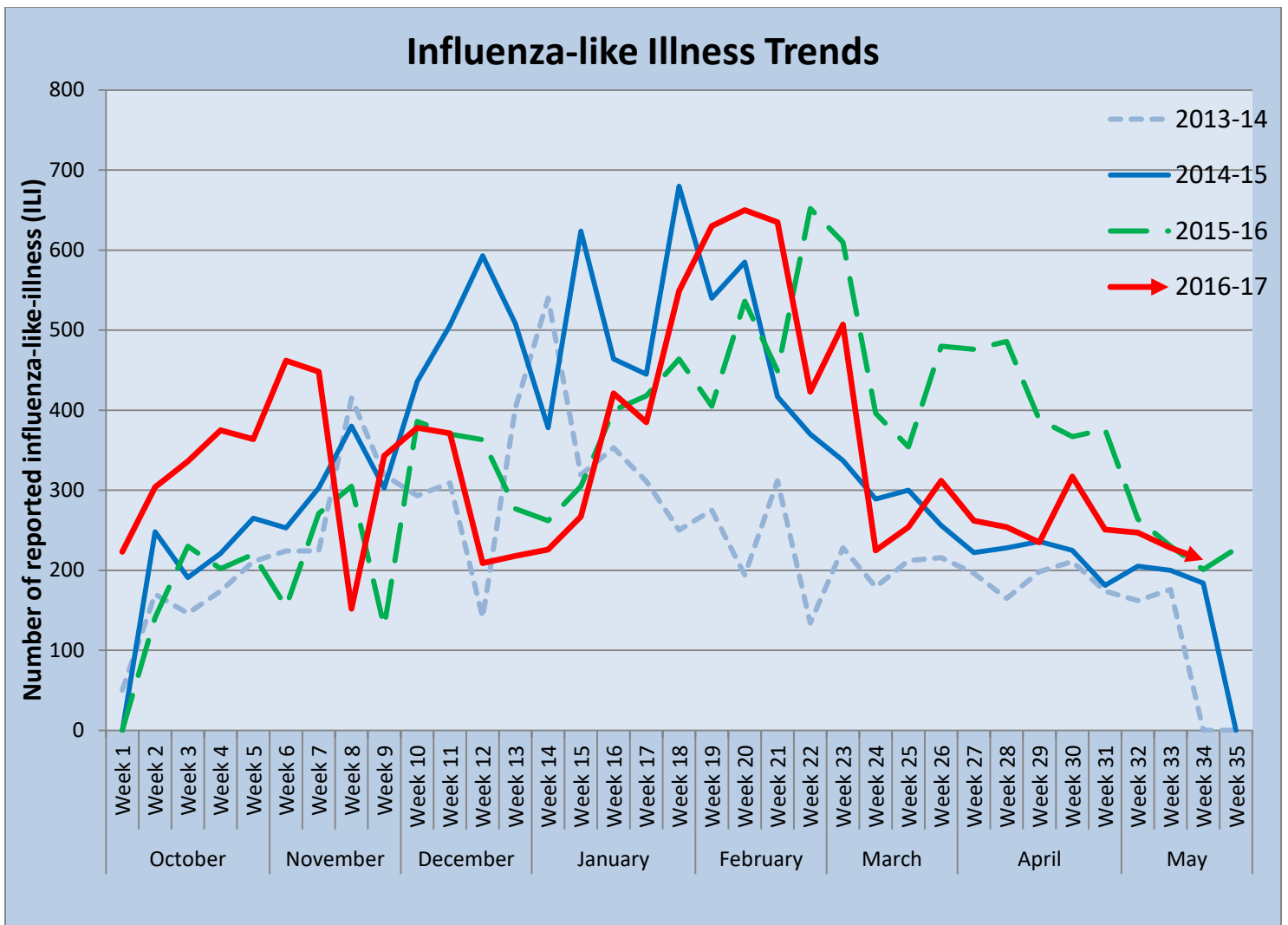


**Breakdown by conditions investigated by MCPHD**

## 2013-2017 Influenza A Trends



**Flu season is October to May. The peak for this season was in February.**

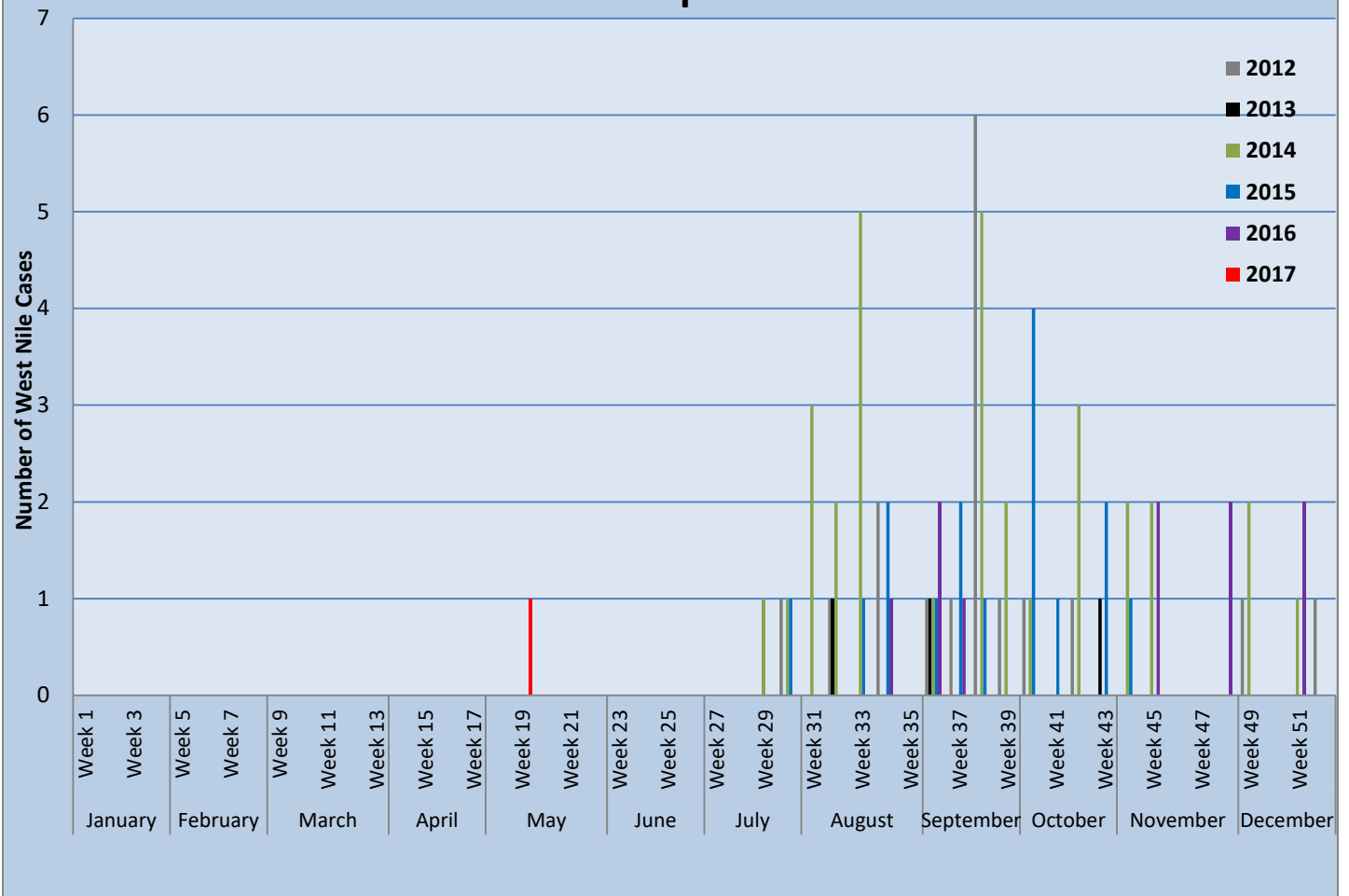


ILI peak was in February in 2017 and has been trending down since then. This is similar to the flu trend.

### Montgomery County 2017 Human West Nile Cases Reported

Case	Date Reported	Sex	Age Range	Case Status	Condition
1.	5/9/2017	Female	60's	West Nile Neuroinvasive	Stable
2.					
3.					
4.					
5.					

## West Nile Cases Reported 2012-2017



**First case in Texas was in Montgomery County. It was very early in the year when compared to other years. The case was suspicious for false positive IgM result. However, the DSHS could not rule it out, so the case was counted as probable WNV.**

### Emergency Preparedness Program:

- Preparedness team conducted a Strategic National Stockpile (SNS) and Point of Dispensing (POD) training to Conroe Independent School District, Montgomery Independent School District and New Caney Independent School District.
- PHEP participated in influenza surveillance and public health investigation training, covering flu virus basics and key terms, and goals of influenza surveillance.
- Preparedness Coordinator facilitated several trainings for Public Health District Staff, leading up to the Alpha POD exercise.
- Preparedness Coordinator team conducted the Alpha POD exercise, 52 MRC volunteers and all of Public Health District staff participate. The exercise tested the capability of dispensing bulk medications to Montgomery County critical infrastructure and first responder agencies in a timely manner.

- Preparedness Coordinator attended several conferences and meetings; PHEP Quarterly meeting, Public Health Emergency Preparedness-Collaborative meeting, and SNS Coordinator Workgroup meeting, Zika Birth Defects Symposium.
- Preparedness team is participating in organizing and planning of Regional Medical Counter Measure (MCM) Full-Scale Exercise.
- Preparedness Coordinator participated in a Community Assessment for Public Health Emergency Response (CASPER) held by Harris County Public Health
- Preparedness Coordinator attended the 2017 Preparedness Summit.
  - The focus of the 2017 Preparedness Summit is to explore the factors driving change in our world, analyze how they will impact the future of public health preparedness, and identify opportunities we have today to drive action toward meeting our future needs.
- Preparedness Coordinator attended the 2017 Texas Emergency Management Conference.
  - This conference is an opportunity for us to exchange best practices and build upon ideas from which progress can be made.
  - The conference attracts over 2,500 elected officials, first responders, emergency managers, and decision makers from across Texas.

## **Medical Reserve Corps Program Jan. – April 2017:**

Membership: 303 volunteers

### Training:

- SkyWarn Storm Spotter Training

### Events:

MRC volunteers participated in several events that allowed them to utilize basic first aid skills or simply be engaged in community events around the county. These events included

- Point of Dispensing Exercise
- Ironman Triathlon
- MRC volunteers have completed two exercises in 2017:
  - The Volunteer Call Down Drill tested the ability of volunteers to recognize and respond to emergency communication from the Texas Disaster Volunteer Registry system. The drill response rate was 18%, down from 19% in early 2016
  - The Public Health Point of Dispensing Exercise tested the ability of volunteers to set up, operate, and demobilize a point of dispensing site here at MCPHD. Volunteers were given a short training and instructions on how to operate the site. They were then timed on how quickly they could “dispense” life saving medication to 50 first responder and health care agencies. 39 volunteers participated in this exercise and accomplished each predetermined measure.
  - In May, the Spring Quarterly meeting was held in preparation for hurricane season. 12 high school and 3 college graduates were honored at this meeting.
  - A booth was hosted at the E. 1488 CERT Preparedness Fair in Magnolia. 70 preparedness kits and over 100 preparedness guides were distributed to attendees.
- All activity from February to March was temporarily suspended while the MRC coordinator was on FMLA.

**Medicaid 1115 Waiver Project**  
February 1, 2017 – May 31, 2017

**1115 Waiver-**

- Mid-term reporting was submitted to Health & Human Services (HHSC) in April for two program metrics. The funding for these metrics has been approved by HHSC, MCPHD is expected to receive \$640,344.39 for these measures in mid-July.
- The next program reporting period will occur in October with a goal of reporting completion on four incentive payment metrics.
- HHSC remains in discussions with The Centers for Medicare & Medicaid (CMS) pertaining to a Waiver renewal beyond December 2017. A decision on this request may not occur until the end of summer or early fall. A Waiver renewal would provide continued funding for Delivery Years (DY) 7 & 8; we are currently in DY6.

**Community Paramedicine-**

- Current patient enrollment: 138 (on a program year goal of 145)
- Clinical encounters provided: 2173
- Non-clinical encounters provided: 1690
- Patients in the program continue to be assisted with:
  - Care coordination between Primary Care Physicians, specialists, home health agencies, and other medical and non-medical personnel.
  - Education on medications and help understanding how and when to take them.
  - Assistance with navigation of healthcare benefits.
  - Proper nutritional needs for a healthy lifestyle.
  - Techniques to properly manage stress.
  - Being directed to additional resources already in place within the county to improve their quality of life.

**Patient Impact-**

- This program continues to deliver services that are not readily available within the healthcare system to the target population. The population is high-risk and underserved in regards to healthcare and receiving navigation services and support within Montgomery County. A recent individual enrolled into the Community Paramedicine program had been homeless, suffering from multiple chronic medical conditions, and significant behavioral health issues. This client had been utilizing 911 services at a high rate as their only access to healthcare. However; they continued in the vicious cycle of using emergency services, going to the hospital, and remaining without adequate



solutions for their situation. Within a very short period of time, this client is now receiving services and support from multiple organizations, is no longer cycling through emergency services, and has become highly engaged in their own care. We see this type of success story constantly with delivery of this program.

STATE OF TEXAS                    §  
  §  
COUNTY OF MONTGOMERY       §

**A RESOLUTION OF THE MONTGOMERY COUNTY PUBLIC HEALTH DISTRICT -  
UASI GRANT**

**WHEREAS**, The Montgomery County Public Health District Administrative Board finds it in the best interest of the citizens of Montgomery County, that the MCPHD-Community Preparedness Project be operated for the years 2017-2018; and

**WHEREAS**, The Montgomery County Public Health District Administrative Board agrees that in the event of loss or misuse of the Office of the Governor funds, The Montgomery County Public Health District Administrative Board assures that the funds will be returned to the Office of the Governor in full.

**WHEREAS**, The Montgomery County Public Health District Administrative Board designates The Montgomery County Public Health District Executive Director as the grantee's authorized official. The authorized official is given the power to apply for, accept, reject, alter or terminate the grant on behalf of the applicant agency.

**NOW THEREFORE, BE IT RESOLVED** that The Montgomery County Public Health District Administrative Board approves submission of the grant application for the MCPHD-Community Preparedness Project to the Office of the Governor.

Signed by:

Passed and Approved this 15th of June, 2017.

Grant Number: [2976103](#)

**BE IT SO RESOLVED.**

Passed and Approved this \_\_\_\_\_ day of \_\_\_\_\_, 2017, by a vote of \_\_\_\_\_ in favor and \_\_\_\_\_ against, \_\_\_\_\_ abstaining.

**MONTGOMERY COUNTY PUBLIC HEALTH  
DISTRICT BOARD OF DIRECTORS**

By: \_\_\_\_\_  
Craig Doyal, Chairman

Attest:

\_\_\_\_\_  
Sandy Wagner, Treasurer

STATE OF TEXAS                   §  
   §  
COUNTY OF MONTGOMERY       §

**A RESOLUTION OF THE MONTGOMERY COUNTY PUBLIC HEALTH DISTRICT -  
UASI GRANT**

**WHEREAS,** The Montgomery County Public Health District Administrative Board finds it in the best interest of the citizens of Montgomery County, that the Montgomery County Public Health District M&A be operated for the years 2017-2018; and

**WHEREAS,** The Montgomery County Public Health District Administrative Board agrees that in the event of loss or misuse of the Office of the Governor funds, The Montgomery County Public Health District Administrative Board assures that the funds will be returned to the Office of the Governor in full.

**WHEREAS,** The Montgomery County Public Health District Administrative Board designates The Montgomery County Public Health District Executive Director as the grantee's authorized official. The authorized official is given the power to apply for, accept, reject, alter or terminate the grant on behalf of the applicant agency.

**NOW THEREFORE, BE IT RESOLVED** that The Montgomery County Public Health District Administrative Board approves submission of the grant application for the Montgomery County Public Health District M&A to the Office of the Governor.

Signed by:

Passed and Approved this 15th of June, 2017.

Grant Number: 2986403

**BE IT SO RESOLVED.**

Passed and Approved this \_\_\_\_\_ day of \_\_\_\_\_, 2017, by a vote of \_\_\_\_\_ in favor and \_\_\_\_\_ against, \_\_\_\_\_ abstaining.

**MONTGOMERY COUNTY PUBLIC HEALTH  
DISTRICT BOARD OF DIRECTORS**

By: \_\_\_\_\_  
Craig Doyal, Chairman

Attest:

\_\_\_\_\_  
Sandy Wagner, Treasurer

**Montgomery County Public Health District**  
**Financial Dashboard for March 2017**  
(dollars expressed in 000's)

	Mar 2017	Mar 2016	Var	Var %
Cash and Investments	1,150	1,222	(72)	-5.9%

Legend	
Green	Favorable Variance
Red	Unfavorable Variance

Income Statement	March 2017				Year to Date			
	Act	Bud	Var	Var %	Act	Bud	Var	Var %
Revenue								
Grant Revenue	46	59	(13)	-21.8%	245	358	(113)	-31.7%
1115 Waiver Revenue	0	0	0	0.0%	933	933	0	0.0%
Other Revenue	11	9	2	21.7%	60	55	4	8.0%
Total Revenue	58	68	(11)	-15.9%	1,237	1,346	(109)	-8.1%
Expenses								
Payroll	50	70	(20)	-28.1%	325	409	(85)	-20.7%
Operating	109	130	(21)	-16.1%	540	794	(254)	-31.9%
Total Operating Expenses	159	199	(41)	-20.3%	865	1,203	(338)	-28.1%
Capital	0	0	0	0.0%	0	0	0	0.0%
Total Expenditures	159	199	(41)	-20.3%	865	1,203	(338)	-28.1%
Net Surplus / (Deficit)	(101)	(131)	30	22.6%	372	143	(230)	-160.6%

Cash and Investments are \$72k less than one year ago.

Revenue: Because the grants are based on reimbursement, grant revenue is less than expected year-to-date due to expenses being less than budgeted.

Other Revenue is running above budget year-to-date now that credit and debit cards are an accepted form of payment.

Payroll: Year-to-date, payroll is below budget as the result of a vacant position. An Epi Nurse has been hired and will begin work in June.

Operating Expense: In general, Operating Expenses are below budget primarily due to timing. We expect some of these timing issues to resolve in the upcoming months.

Year-to-date, Other Services - Community Paramedicine is less than budget primarily due to billable encounters being less than expected due to a larger "carry-over" of patients from the previous delivery year to the current year. These patients are not requiring as high a level of care as a newly enrolled patient. This is a cyclical phenomenon; thus, billable encounters are expected to increase during the course of the

# Montgomery County Public Health District

## Balance Sheet

As of March 31, 2017

Fund 22 3/31/2017

### ASSETS

#### Cash and Equivalents

22-000-10400	Petty Cash-PHP-BS	\$200.00
22-000-11510	MCPHD Operating Account - WF-BS	<u>\$1,149,697.27</u>
	Total Cash and Equivalents	<u>\$1,149,897.27</u>

#### Receivables

22-000-14300	A/R-Other MCpHD -BS	\$7,500.00
22-000-14400	A/R-Grant Revenue-BS	\$113,548.92
22-000-14550	Receivable from Primary Government-BS	<u>(\$27,508.43)</u>
	Total Receivables	<u>\$93,540.49</u>

### TOTAL ASSETS

\$1,243,437.76

### LIABILITIES

#### Current Liabilities

22-000-20500	Accounts Payable-BS	\$1,220.04
22-000-21000	Accrued Expenditures-BS	\$400.00
22-000-21400	Accrued Payroll-BS	<u>\$19,850.28</u>
	Total Current Liabilities	<u>\$21,470.32</u>

#### Deferred Liabilities

22-000-23200	Deferred Revenue MCPHD-BS	<u>\$6,733.93</u>
	Total Deferred Liabilities	<u>\$6,733.93</u>

### TOTAL LIABILITIES

\$28,204.25

### CAPITAL

22-000-30700	Reserved - Prepays-BS	\$548.41
22-000-30802	Reserved - NACCHO 2014-BS	\$6,733.93
22-000-39000	Unreserved Fund Balance-MCPHD	<u>(\$548.41)</u>
22-000-39050	Unassigned Fund Balance-MCPHD-BS	<u>\$1,208,499.58</u>

### TOTAL CAPITAL

\$1,215,233.51

### TOTAL LIABILITIES AND CAPITAL

\$1,243,437.76

**Montgomery County Public Health District  
Preliminary Income Statement - Actual vs. Budget  
For the Period Ended March 31, 2017**

		<b>Current Month Actual</b>	<b>Current Month Budget</b>	<b>Current Month Variance</b>	<b>YTD Actual</b>	<b>YTD Budget</b>	<b>YTD Variance</b>	<b>Total Annual Budget</b>	<b>% YTD Annual Budget</b>	<b>Annual Budget Remaining</b>
<b>Revenue</b>										
<b>Other Revenue</b>										
41500	Miscellaneous Income	7,590.00	7,518.00	72.00	45,198.00	45,108.00	90.00	90,216.00	50.10%	45,018.00
41550	Proceeds from Grant Funding	46,323.28	59,233.00	(12,909.72)	244,554.10	357,830.00	(113,275.90)	598,277.00	40.88%	353,722.90
43750	1115 Waiver - Paramedicine	0.00	0.00	0.00	933,333.34	933,333.00	0.34	933,333.00	100.00%	(0.34)
43930	Immunization Fees	3,751.93	1,700.00	2,051.93	14,626.29	10,200.00	4,426.29	20,400.00	71.70%	5,773.71
<b>Total Other Revenue</b>		<b>57,665.21</b>	<b>68,451.00</b>	<b>(10,785.79)</b>	<b>1,237,711.73</b>	<b>1,346,471.00</b>	<b>(108,759.27)</b>	<b>1,642,226.00</b>	<b>75.37%</b>	<b>404,514.27</b>
<b>Total Revenue</b>		<b>57,665.21</b>	<b>68,451.00</b>	<b>(10,785.79)</b>	<b>1,237,711.73</b>	<b>1,346,471.00</b>	<b>(108,759.27)</b>	<b>1,642,226.00</b>	<b>75.37%</b>	<b>404,514.27</b>
<b>Expenses</b>										
<b>Payroll Expenses</b>										
51100	Regular Pay	41,139.31	52,363.00	(11,223.69)	232,568.69	303,280.00	(70,711.31)	528,110.00	44.04%	295,541.31
51200	Overtime Pay	0.00	0.00	0.00	95.51	0.00	95.51	0.00	0.00%	(95.51)
51300	Paid Time Off	1,827.75	0.00	1,827.75	25,484.25	0.00	25,484.25	0.00	0.00%	(25,484.25)
51500	Payroll Taxes	3,016.10	3,983.00	(966.90)	18,635.59	22,672.00	(4,036.41)	39,730.00	46.91%	21,094.41
51650	TCDRS Plan	2,635.64	3,779.00	(1,143.36)	19,967.41	21,884.00	(1,916.59)	38,789.00	51.48%	18,821.59
51700	Health & Dental	1,575.90	9,635.00	(8,059.10)	27,842.49	61,560.00	(33,717.51)	106,125.00	26.24%	78,282.51
<b>Total Payroll Expenses</b>		<b>50,194.70</b>	<b>69,760.00</b>	<b>(19,565.30)</b>	<b>324,593.94</b>	<b>409,396.00</b>	<b>(84,802.06)</b>	<b>712,754.00</b>	<b>45.54%</b>	<b>388,160.06</b>
<b>Operating Expenses</b>										
52300	Bank Charges	47.64	0.00	47.64	287.71	0.00	287.71	0.00	0.00%	(287.71)
52350	Credit Card Processing Fee	0.00	40.00	(40.00)	0.00	240.00	(240.00)	480.00	0.00%	480.00
52950	Community Education	0.00	0.00	0.00	0.00	90.00	(90.00)	180.00	0.00%	180.00
52975	Community Preparedness Supplies	0.00	0.00	0.00	24.79	0.00	24.79	0.00	0.00%	(24.79)
53050	Computer Software	0.00	400.00	(400.00)	2,000.00	3,150.00	(1,150.00)	5,550.00	36.04%	3,550.00
53100	Computer Supplies/Non-Cap.	0.00	0.00	0.00	872.08	2,450.00	(1,577.92)	2,450.00	35.60%	1,577.92
53150	Conferences - Fees, Travel, & Meals	1,986.23	600.00	1,386.23	4,267.28	4,250.00	17.28	13,985.00	30.51%	9,717.72
53330	Contractual Obligations- Other	0.00	4,333.00	(4,333.00)	8,500.00	25,998.00	(17,498.00)	46,497.00	18.28%	37,997.00
53900	Disposable Medical Supplies	240.54	632.00	(391.46)	12,410.86	3,796.00	8,614.86	7,513.00	165.19%	(4,897.86)
54100	Dues/Subscriptions	0.00	0.00	0.00	0.00	3,116.00	(3,116.00)	3,566.00	0.00%	3,566.00
54200	Durable Medical Equipment	0.00	0.00	0.00	0.00	150.00	(150.00)	150.00	0.00%	150.00
54900	Insurance	0.00	0.00	0.00	0.00	5,000.00	(5,000.00)	12,500.00	0.00%	12,500.00
55700	Management Fees	8,333.33	9,221.00	(887.67)	49,999.98	55,329.00	(5,329.02)	100,015.00	49.99%	50,015.02
55900	Meals - Business and Travel	0.00	0.00	0.00	0.00	500.00	(500.00)	750.00	0.00%	750.00
56200	Mileage Reimbursements	818.48	717.00	101.48	1,851.69	4,302.00	(2,450.31)	7,500.00	24.69%	5,648.31
56300	Office Supplies	442.80	699.00	(256.20)	1,508.91	4,344.00	(2,835.09)	7,563.00	19.95%	6,054.09
56525	Other Services - Community Paramedicine-	88,200.00	100,000.00	(11,800.00)	409,800.00	600,000.00	(190,200.00)	1,200,000.00	34.15%	790,200.00
57000	Printing Services	0.00	1,337.00	(1,337.00)	0.00	8,172.00	(8,172.00)	15,489.00	0.00%	15,489.00
57100	Professional Fees	0.00	75.00	(75.00)	36.08	1,050.00	(1,013.92)	2,100.00	1.72%	2,063.92
57500	Rent	7,481.25	8,467.00	(985.75)	44,887.50	50,802.00	(5,914.50)	89,781.00	50.00%	44,893.50
57800	Special Events Supplies	0.00	883.00	(883.00)	0.00	5,298.00	(5,298.00)	7,947.00	0.00%	7,947.00

57900	Station Supplies	0.00	0.00	0.00	40.59	0.00	40.59	0.00	0.00%	(40.59)
58200	Telephones-Cellular	841.18	868.00	(26.82)	2,703.60	5,208.00	(2,504.40)	9,196.00	29.40%	6,492.40
58500	Training/Related Expenses-CE	0.00	166.00	(166.00)	275.96	3,958.00	(3,682.04)	5,434.00	5.08%	5,158.04
58600	Travel Expenses	0.00	125.00	(125.00)	0.00	750.00	(750.00)	1,125.00	0.00%	1,125.00
58700	Uniforms	150.00	246.00	(96.00)	150.00	1,424.00	(1,274.00)	2,088.00	7.18%	1,938.00
51800	Unemployment Ins.	0.00	202.00	(202.00)	0.00	1,211.00	(1,211.00)	2,089.00	0.00%	2,089.00
59350	Worker's Compensation Insurance	114.60	584.00	(469.40)	684.29	3,383.00	(2,698.71)	6,438.00	10.63%	5,753.71
Total Operating Expenses		<u>108,656.05</u>	<u>129,595.00</u>	<u>(20,938.95)</u>	<u>540,301.32</u>	<u>793,971.00</u>	<u>(253,669.68)</u>	<u>1,550,386.00</u>	34.85%	<u>1,010,084.68</u>
Indigent Care Expenses										
Total Operating and Payroll Expenses		<u>158,850.75</u>	<u>199,355.00</u>	<u>(40,504.25)</u>	<u>864,895.26</u>	<u>1,203,367.00</u>	<u>(338,471.74)</u>	<u>2,263,140.00</u>	38.22%	<u>1,398,244.74</u>
Capital Expenditures										
Total Expenditures		<u>158,850.75</u>	<u>199,355.00</u>	<u>(40,504.25)</u>	<u>864,895.26</u>	<u>1,203,367.00</u>	<u>(338,471.74)</u>	<u>2,263,140.00</u>	38.22%	<u>1,398,244.74</u>
Revenue over Expenses		<u>(101,185.54)</u>	<u>(130,904.00)</u>	<u>29,718.46</u>	<u>372,816.47</u>	<u>143,104.00</u>	<u>229,712.47</u>	<u>(620,914.00)</u>	-60.04%	<u>(993,730.47)</u>

**Agenda Item #12**

**Montgomery County Public Health District**

**Budget Amendment - Fiscal Year Ending September 30, 2017**

**Supplement to the Amendment Presented to the Board on June 15, 2017**

<b>Department</b>	<b>Account</b>	<b>Description</b>	<b>Total</b>	<b>Notes</b>	<b>Impact</b>
CPS/Ebola	22-115-53330	Contractual Obligations- Other	(3,640.00)	Reclassification of Budget	Decrease to Expense
	22-115-53900	Disposable Medical Supplies	3,640.00	Purchase Zika Kit Supplies	Increase to Expense
		Total CPS/Ebola	0.00		
IDCU/SUREB	22-117-41550	Proceeds from Grant Funding-IDCU/SUREB	(6,902.74)	New Grant Awarded Funds	Increase to Revenue
	22-117-51100	Personnel	4,377.50	New Grant Awarded Funds	Increase to Expense
	22-117-51300	PTO	-	New Grant Awarded Funds	Increase to Expense
	22-117-51500	P/R Tax	337.07	New Grant Awarded Funds	Increase to Expense
	22-117-51650	TCDRS	363.33	New Grant Awarded Funds	Increase to Expense
	22-117-51700	Health/Den	105.04	New Grant Awarded Funds	Increase to Expense
	22-117-57500	Mgt Fees	958.33	New Grant Awarded Funds	Increase to Expense
	22-117-56200	Mileage	70.00	New Grant Awarded Funds	Increase to Expense
	22-117-56300	Supplies	51.25	New Grant Awarded Funds	Increase to Expense
	22-117-57500	Rent	508.33	New Grant Awarded Funds	Increase to Expense
	22-117-58200	Telephone/Cellular	110.00	New Grant Awarded Funds	Increase to Expense
	22-117-59350	Worker's Comp Ins	21.89	New Grant Awarded Funds	Increase to Expense
		Total IDCU/SUREB	0.00		
CPS/Hazards	22-118-41550	Proceeds from Grant Funding-CPS Hazards	(74,851.83)	New Grant Awarded Funds	Increase to Revenue
	22-118-51100	Reg Pay	45,726.24	New Grant Awarded Funds	Increase to Expense
	22-118-51300	PTO	-	New Grant Awarded Funds	Increase to Expense
	22-118-51500	P/R Tax	3,520.92	New Grant Awarded Funds	Increase to Expense
	22-118-51650	TCDRS	3,795.28	New Grant Awarded Funds	Increase to Expense
	22-118-51700	Health & Den	7,562.42	New Grant Awarded Funds	Increase to Expense
	22-118-53100	Comp Supplies/Non Cap	250.00	New Grant Awarded Funds	Increase to Expense
	22-118-53150	Conferences	2,727.24	New Grant Awarded Funds	Increase to Expense
	22-118-53330	Contractual Ob	5,499.99	New Grant Awarded Funds	Increase to Expense
	22-118-54100	Dues/Subscription	445.74	New Grant Awarded Funds	Increase to Expense
	22-118-55700	Mgt Fees	6,498.00	New Grant Awarded Funds	Increase to Expense
	22-118-56200	Mileage	675.00	New Grant Awarded Funds	Increase to Expense



**Montgomery County Public Health District**  
**Budget Amendment - Fiscal Year Ending September 30, 2017**  
**Supplement to the Amendment Presented to the Board on June 15, 2017**

<b>Department</b>	<b>Account</b>	<b>Description</b>	<b>Total</b>	<b>Notes</b>	<b>Impact</b>
	22-118-56300	Supplies	750.00	New Grant Awarded Funds	Increase to Expense
	22-118-57000	Printed Materials	646.74	New Grant Awarded Funds	Increase to Expense
	22-118-57500	Rent	3,937.50	New Grant Awarded Funds	Increase to Expense
	22-118-58200	Telephone/Cellular	780.00	New Grant Awarded Funds	Increase to Expense
	22-118-58700	Uniforms	125.01	New Grant Awarded Funds	Increase to Expense
	22-118-59350	Worker's Comp Ins	228.63	New Grant Awarded Funds	Increase to Expense
		Total CPS/Hazards	<u>8,316.88</u>		
CPS/CRI	22-209-41550	Proceeds from Grant Funding-CPS CRI	(28,991.58)	New Grant Awarded Funds	Increase to Revenue
	22-209-51100	Regular Pay	13,044.00	New Grant Awarded Funds	Increase to Expense
	22-209-51300	PTO	-	New Grant Awarded Funds	Increase to Expense
	22-209-51500	P/R Tax	1,004.39	New Grant Awarded Funds	Increase to Expense
	22-209-51650	TCDRS	1,082.75	New Grant Awarded Funds	Increase to Expense
	22-209-51700	Health/Den	2,413.13	New Grant Awarded Funds	Increase to Expense
	22-209-53050	Computer Software	1,177.50	New Grant Awarded Funds	Increase to Expense
	22-209-53150	Conferences	445.74	New Grant Awarded Funds	Increase to Expense
	22-209-55700	Mgt Fee	3,846.51	New Grant Awarded Funds	Increase to Expense
	22-209-56200	Mileage	270.00	New Grant Awarded Funds	Increase to Expense
	22-209-56300	Supplies	2,750.01	New Grant Awarded Funds	Increase to Expense
	22-209-57500	Rent	5,783.61	New Grant Awarded Funds	Increase to Expense
	22-209-58200	Telephone/Cellular	330.00	New Grant Awarded Funds	Increase to Expense
	22-209-59350	Worker's Comp Ins	65.22	New Grant Awarded Funds	Increase to Expense
		Total CPS/CRI	<u>3,221.28</u>		
RLSS/LPHS	22-413-41550	Proceeds from Grant Funding-RLSS/LPHS	(5,622.42)	New Grant Awarded Funds	Increase to Revenue
	22-413-51100	Regular Pay	5,196.17	New Grant Awarded Funds	Increase to Expense
	22-413-51300	PTO	-	New Grant Awarded Funds	Increase to Expense
	22-413-51500	Payroll Taxes	108.26	New Grant Awarded Funds	Increase to Expense
	22-413-51650	TCDRS	108.26	New Grant Awarded Funds	Increase to Expense
	22-413-51700	Health Dental	108.25	New Grant Awarded Funds	Increase to Expense
	22-413-53900	Disposable Medical Suppl	54.46	New Grant Awarded Funds	Increase to Expense
	22-413-56200	Mileage	11.04	New Grant Awarded Funds	Increase to Expense

**Montgomery County Public Health District**  
**Budget Amendment - Fiscal Year Ending September 30, 2017**  
**Supplement to the Amendment Presented to the Board on June 15, 2017**

<b>Department</b>	<b>Account</b>	<b>Description</b>	<b>Total</b>	<b>Notes</b>	<b>Impact</b>
	22-413-56300	Office Supplies	10.00	New Grant Awarded Funds	Increase to Expense
	22-413-59350	Workers Comp	25.98	New Grant Awarded Funds	Increase to Expense
		Total RLSS/LPHS	-		
Increase / (Decrease) Net Revenue over Expenses			(11,538.16)		
FY 2017 Budgeted Net Revenue over Expenses			(620,914.00)		
FY 2017 Amended Budgeted Net Revenue over Expenses			(632,452.16)		

AGENDA ITEM # 13

Consider and act on payment of Grant invoices (Sandy Wagner, Treasurer-Public Health Board)

**TOTAL FOR**

**PUBLIC HEALTH INVOICES**

**\$252,079.68**

**Montgomery County Hospital District**  
**Invoice Expense Allocation Report**  
Board Meeting 06/15/2017- Public Health Paid Invoices

Vendor Name	Invoice Date	Invoice No.	Payment No.	Payment Date	Invoice Description	Account No.	Account Description	Amount
AMAZON.COM LLC	1/10/2017	098335171421	90555	2/2/2017	SMEAD PRESSBOARD	22-412-56300	Office Supplies-PHC R	\$183.62
	2/10/2017	15543215940	91070	3/9/2017	EXAM TABLE PAPER ROLLS, CREPE	22-404-56300	Office Supplies-PHC M	\$27.20
	2/10/2017	130523092098	91071	3/9/2017	SMEAD ETS COLOR CODED YEAR LAB & PRESSBOARD	22-404-56300	Office Supplies-PHC M	\$55.76
	3/10/2017	125870806660 (22)	91467	4/5/2017	OFFICE SUPPLIES	22-116-56300	Office Supplies-PHEP	\$73.95
						22-404-56300	Office Supplies-PHC M	\$119.45
	3/10/2017	131049545654 (22)	91468	4/5/2017	OFFICE SUPPLIES	22-404-56300	Office Supplies-PHC M	\$189.68
<i>Totals for AMAZON.COM LLC:</i>								<u>\$649.66</u>
BCBS OF TEXAS (POB 731428)	1/20/2017	TY483010005 01/2017	90548	1/26/2017	CLAIMS FOR 01/14/17-01/20/17 (FUND 22)	22-116-51700	Health & Dental-PHEP	\$8.26
	<i>Totals for BCBS OF TEXAS (POB 731428):</i>							
CAMERON COUNTY	3/6/2017	3629 03/06/17 100	2685	3/20/2017	ZIKA CONF D. WOMBLES	22-113-53150	Conferences - Fees, Travel, & Meals-PHEP	\$100.00
	<i>Totals for CAMERON COUNTY:</i>							
CDW GOVERNMENT, INC.	1/25/2017	GQP9286	90678	2/8/2017	VLO THINKPAD E570	22-115-53100	Computer Supplies/Non-Cap.-PHEP	\$872.08
	<i>Totals for CDW GOVERNMENT, INC.:</i>							
CLARKSON, BRITTANI	1/27/2017	CLA012717	90572	2/2/2017	MILEAGE REIMBURSEMENT 01/11/17-01/19/17	22-307-56200	Mileage Reimbursements-MRC U	\$53.71
	<i>Totals for CLARKSON, BRITTANI:</i>							
DEPARTMENT OF STATE HEALTH SERVICES	1/3/2017	CEN.CM5044 122016	90578	2/2/2017	JUNE 2016 LABS	22-404-57100	Professional Fees-PHC M	\$15.80
	<i>Totals for DEPARTMENT OF STATE HEALTH SERVICES (CEN):</i>							
EXPEDIA	3/6/2017	3629 03/06/17 612.85	2705	3/20/2017	HOTEL PH CONF D. WOMBLES	22-113-53150	Conferences - Fees, Travel, & Meals-PHEP	\$612.89
	<i>Totals for EXPEDIA:</i>							
HAMPTON INN HOTEL	3/6/2017	3629 03/06/17 268.94	2708	3/20/2017	DSRIP HOTEL A. KARRER	22-501-53150	Conferences - Fees, Travel, & Meals-1115	\$268.94
	<i>Totals for HAMPTON INN HOTEL:</i>							
IBRAHIM, SYED	1/20/2017	IBR012017	90464	1/25/2017	MILEAGE REIMBURSEMENT 01/09/17-01/13/17	22-116-56200	Mileage Reimbursements-PHEP	\$44.67
	<i>Totals for IBRAHIM, SYED:</i>							
KARRER, ANDREW	2/8/2017	KAR020817	90700	2/8/2017	PER DIEM/DSRIP LEARNING COLLABORATIVE 02/21/17	22-501-53150	Conferences - Fees, Travel, & Meals-1115	\$117.50
	<i>Totals for KARRER, ANDREW:</i>							
LEAL, RENE	1/20/2017	LEA012017	90468	1/25/2017	MILEAGE REIMBURSEMENT 12/06/16	22-208-56200	Mileage Reimbursements-CRI D	\$42.39
	1/24/2017	LEA012417	90468	1/25/2017	MILEAGE REIMBURSEMENT 01/03/17-01/20/17	22-208-56200	Mileage Reimbursements-CRI D	\$88.22
	2/28/2017	LEA022817	91113	3/9/2017	MILEAGE REIMBURSEMENT 02/07/17-02/17/17	22-208-56200	Mileage Reimbursements-CRI D	\$109.14
	3/28/2017	LEA032817	91500	4/5/2017	MILEAGE REIMBURSEMENT 03/17/17-03/28/17	22-208-56200	Mileage Reimbursements-CRI D	\$93.89
	<i>Totals for LEAL, RENE:</i>							
LIFE-ASSIST, INC.	3/3/2017	787994	91281	3/22/2017	MEDICAL SUPPLIES		Disposable Medical Supplies-PHC M	\$74.50
	<i>Totals for LIFE-ASSIST, INC.:</i>							

**Montgomery County Hospital District**  
**Invoice Expense Allocation Report**  
Board Meeting 06/15/2017- Public Health Paid Invoices

Vendor Name	Invoice Date	Invoice No.	Payment No.	Payment Date	Invoice Description	Account No.	Account Description	Amount
MCKESSON GENERAL MEDICAL CORP.	1/12/2017	92499003	90497	1/25/2017	MEDICAL SUPPLIES	22-401-53900	Disposable Medical Supplies-PHC G	\$31.16
	1/12/2017	92544512	90497	1/25/2017	MEDICAL SUPPLIES	22-401-53900	Disposable Medical Supplies-PHC G	\$317.38
	1/24/2017	93181509	90715	2/8/2017	MEDICAL SUPPLIES	22-401-53900	Disposable Medical Supplies-PHC G	\$37.52
	2/13/2017	94366576	91025	3/1/2017	MEDICAL SUPPLIES	22-401-53900	Disposable Medical Supplies-PHC M	\$24.72
	3/3/2017	95616113	91284	3/22/2017	MEDICAL SUPPLIES	22-401-53900	Disposable Medical Supplies-PHC M	\$89.14
	3/6/2017	95698712	91284	3/22/2017	MEDICAL SUPPLIES	22-404-53900	Disposable Medical Supplies-PHC M	\$7.70
	<i>Totals for MCKESSON GENERAL MEDICAL CORP.:</i>							
MOORE MEDICAL CORP.	3/29/2017	99427789I (FUND 22)	91758	4/12/2017	MEDICAL SUPPLIES	22-404-53900	Disposable Medical Supplies-PHC M	\$69.20
	<i>Totals for MOORE MEDICAL CORP.:</i>							
NAACHO	3/6/2017	3629 03/06/17 545.	2720	3/20/2017	PREP '17 CONF R. LEAL	22-116-53150	Conferences - Fees, Travel, & Meals-PHEP	\$545.00
	<i>Totals for NAACHO:</i>							
OPTIQUEST INTERNET SERVICES, INC.	1/1/2017	45823	90645	2/3/2017	NEXTGEN HOSTING	22-401-53050	Computer Software-PHC G	\$400.00
	<i>Totals for OPTIQUEST INTERNET SERVICES, INC.:</i>							
OPTUM HEALTH BANK	1/5/2017	OPT010517-22	2517	1/1/2017	EMPLOYER HSA ET FUNDING 2017	22-113-51700	Health & Dental-PHEP	\$750.00
						22-404-51700	Health & Dental-PHC M	\$1,500.00
						22-412-51700	Health & Dental-PHC R	\$750.00
	1/4/2017	OPT010417-22	2519	1/4/2017	EMPLOYER HSA ET FUNDING DECEMBER 2016	22-113-51700	Health & Dental-PHEP	\$62.50
						22-404-51700	Health & Dental-PHC M	\$125.00
						22-412-51700	Health & Dental-PHC R	\$62.50
	1/31/2017	OPT013117-22	2521	1/31/2017	EMPLOYER HSA ET FUNDING JANUARY 2017	22-113-51700	Health & Dental-PHEP	\$62.50
						22-404-51700	Health & Dental-PHC M	\$125.00
						22-412-51700	Health & Dental-PHC R	\$62.50
	2/28/2017	OPT022817-22	2653	2/28/2017	EMPLOYER HSA ET FUNDING FEBRUARY 2017	22-113-51700	Health & Dental-PHEP	\$62.50
						22-404-51700	Health & Dental-PHC M	\$125.00
						22-412-51700	Health & Dental-PHC R	\$62.50
	3/31/2017	OPT033117-22	2725	3/31/2017	EMPLOYER HSA ET FUNDING MARCH 2017	22-113-51700	Health & Dental-PHEP	\$62.50
						22-404-51700	Health & Dental-PHC M	\$125.00
						22-412-51700	Health & Dental-PHC R	\$62.50
<i>Totals for OPTUM HEALTH BANK:</i>								<u>\$4,000.00</u>
SIMS, CHARLES R M.D.	1/1/2017	DEC 051116-009	90172	12/28/2016	MONTHLY RETAINER FOR DECEMBER 2016	22-900-53330	Contractual Obligations- Other-MCPHD	\$1,000.00
	2/1/2017	JAN 051106-010	90654	2/3/2017	MONTHLY RETAINER FOR JANUARY 2017	22-900-53330	Contractual Obligations- Other-MCPHD	\$2,000.00
	2/1/2017	JAN 051106	90726	2/8/2017	MONTHLY RETAINER (BACK PYMTS SEP - DEC 2016)	22-900-53330	Contractual Obligations- Other-MCPHD	\$500.00
						22-900-53330	Contractual Obligations- Other-MCPHD	\$1,000.00
						22-900-53330	Contractual Obligations- Other-MCPHD	\$1,000.00
						22-900-53330	Contractual Obligations- Other-MCPHD	\$1,000.00
<i>Totals for SIMS, CHARLES R M.D.:</i>								<u>\$6,500.00</u>
STANDARD INSURANCE COMPANY (POB 6	1/18/2017	160-160682-2/22 JAN	2505	1/18/2017	VISION PREMIUM (FUND 22) 01/01/17 - 01/31/17		Health & Dental-PHEP	\$6.79
						22-116-51700	Health & Dental-PHEP	\$16.92

**Montgomery County Hospital District**  
**Invoice Expense Allocation Report**  
Board Meeting 06/15/2017- Public Health Paid Invoices

Vendor Name	Invoice Date	Invoice No.	Payment No.	Payment Date	Invoice Description	Account No.	Account Description	Amount
						22-208-51700	Health & Dental-CRI D	\$16.92
						22-309-51700	Health & Dental-MRC U	\$6.79
						22-404-51700	Health & Dental-PHC M	\$23.71
						22-412-51700	Health & Dental-PHC R	\$6.79
						22-501-51700	Health & Dental-1115	\$16.92
						22-900-51700	Health & Dental-MCPHD	\$16.92
	1/18/2017	160-162682-1/22 JAN	2506	1/18/2017	DENTAL PREMIUMS (FUND 22) 01/01/17 - 01/31/17	22-113-51700	Health & Dental-PHEP	\$29.19
						22-116-51700	Health & Dental-PHEP	\$114.69
						22-208-51700	Health & Dental-CRI D	\$114.69
						22-309-51700	Health & Dental-MRC U	\$29.19
						22-404-51700	Health & Dental-PHC M	\$29.19
						22-412-51700	Health & Dental-PHC R	\$29.19
						22-501-51700	Health & Dental-1115	\$114.69
						22-900-51700	Health & Dental-MCPHD	\$29.19
	1/1/2017	160682-22 01/01/17	2510	1/1/2017	LIFE & DISABILITY INSURANCE PREMIUMS 01/1/17 - 01	22-113-51700	Health & Dental-PHEP	\$35.39
						22-116-51700	Health & Dental-PHEP	\$90.94
						22-208-51700	Health & Dental-CRI D	\$36.98
						22-309-51700	Health & Dental-MRC U	\$35.84
						22-404-51700	Health & Dental-PHC M	\$79.43
						22-412-51700	Health & Dental-PHC R	\$48.87
						22-501-51700	Health & Dental-1115	\$55.97
						22-900-51700	Health & Dental-MCPHD	\$66.18
	2/1/2017	160-160682-2/22 FEB	2531	2/1/2017	VISION PREMIUM (FUND 22) 02/01/17 - 02/28/17	22-113-51700	Health & Dental-PHEP	\$6.79
						22-116-51700	Health & Dental-PHEP	\$16.92
						22-208-51700	Health & Dental-CRI D	\$16.92
						22-309-51700	Health & Dental-MRC U	\$6.79
						22-404-51700	Health & Dental-PHC M	\$23.71
						22-412-51700	Health & Dental-PHC R	\$6.79
						22-900-51700	Health & Dental-MCPHD	\$16.92
	2/1/2017	160-160682-1/22 FEB	2533	2/1/2017	DENTAL PREMIUMS (FUND 22) 02/01/17 - 02/28/17	22-113-51700	Health & Dental-PHEP	\$29.19
						22-116-51700	Health & Dental-PHEP	\$114.69
						22-208-51700	Health & Dental-CRI D	\$114.69
						22-309-51700	Health & Dental-MRC U	\$29.19
						22-404-51700	Health & Dental-PHC M	\$29.19
						22-412-51700	Health & Dental-PHC R	\$29.19
						22-900-51700	Health & Dental-MCPHD	\$29.19
	2/1/2017	160682-22 02/01/17	2655	2/1/2017	LIFE & DISABILITY INSURANCE PREMIUMS 02/1/17 - 02	22-113-51700	Health & Dental-PHEP	\$35.39
						22-116-51700	Health & Dental-PHEP	\$90.94
						22-208-51700	Health & Dental-CRI D	\$36.98
						22-309-51700	Health & Dental-MRC U	\$35.84
						22-404-51700	Health & Dental-PHC M	\$79.43
						22-412-51700	Health & Dental-PHC R	\$48.87
						22-900-51700	Health & Dental-MCPHD	\$66.18
	3/1/2017	160-160682-1/22 MAI	2668	3/1/2017	DENTAL PREMIUMS (FUND 22) 03/01/17 - 03/31/17	22-113-51700	Health & Dental-PHEP	\$29.19
						22-116-51700	Health & Dental-PHEP	\$114.69

**Montgomery County Hospital District**  
**Invoice Expense Allocation Report**  
Board Meeting 06/15/2017- Public Health Paid Invoices

Vendor Name	Invoice Date	Invoice No.	Payment No.	Payment Date	Invoice Description	Account No.	Account Description	Amount
						22-208-51700	Health & Dental-CRI D	\$114.69
						22-309-51700	Health & Dental-MRC U	\$29.19
						22-404-51700	Health & Dental-PHC M	\$29.19
						22-412-51700	Health & Dental-PHC R	\$29.19
						22-900-51700	Health & Dental-MCPHD	\$29.19
	3/1/2017	160-160682-2/22 MAI	2670	3/1/2017	VISION PREMIUM (FUND 22) 03/01/17 - 03/31/17	22-113-51700	Health & Dental-PHEP	\$6.79
						22-116-51700	Health & Dental-PHEP	\$16.92
						22-208-51700	Health & Dental-CRI D	\$16.92
						22-309-51700	Health & Dental-MRC U	\$6.79
						22-404-51700	Health & Dental-PHC M	\$23.71
						22-412-51700	Health & Dental-PHC R	\$6.79
						22-900-51700	Health & Dental-MCPHD	\$16.92
	3/1/2017	160682-22 03/01/17	2672	3/1/2017	LIFE & DISABILITY INSURANCE PREMIUMS 03/1/17 - 03	22-113-51700	Health & Dental-PHEP	\$35.39
						22-116-51700	Health & Dental-PHEP	\$90.94
						22-208-51700	Health & Dental-CRI D	\$36.98
						22-309-51700	Health & Dental-MRC U	\$35.64
						22-404-51700	Health & Dental-PHC M	\$79.43
						22-412-51700	Health & Dental-PHC R	\$48.87
						22-900-51700	Health & Dental-MCPHD	\$66.18
	3/29/2017	160682-22 04/01/17	2768	3/29/2017	LIFE & DISABILITY INSURANCE PREMIUMS 04/01/17 - 0	22-113-51700	Health & Dental-PHEP	\$35.39
						22-116-51700	Health & Dental-PHEP	\$90.94
						22-208-51700	Health & Dental-CRI D	\$36.98
						22-309-51700	Health & Dental-MRC U	\$38.24
						22-404-51700	Health & Dental-PHC M	\$79.43
						22-412-51700	Health & Dental-PHC R	\$48.87
						22-900-51700	Health & Dental-MCPHD	\$66.18
	3/31/2017	160-160682-2/22 APR	2770	3/31/2017	VISION PREMIUM (FUND 22) 04/01/17 - 04/30/17	22-113-51700	Health & Dental-PHEP	\$6.79
						22-116-51700	Health & Dental-PHEP	\$16.92
						22-208-51700	Health & Dental-CRI D	\$16.92
						22-309-51700	Health & Dental-MRC U	\$6.79
						22-404-51700	Health & Dental-PHC M	\$23.71
						22-412-51700	Health & Dental-PHC R	\$6.79
						22-900-51700	Health & Dental-MCPHD	\$16.92
	3/31/2017	160-160682-1/22 APR	2772	3/31/2017	DENTAL PREMIUMS (FUND 22) 04/01/17 - 04/30/17	22-113-51700	Health & Dental-PHEP	\$29.19
						22-116-51700	Health & Dental-PHEP	\$114.69
						22-208-51700	Health & Dental-CRI D	\$114.69
						22-309-51700	Health & Dental-MRC U	\$29.19
						22-404-51700	Health & Dental-PHC M	\$29.19
						22-412-51700	Health & Dental-PHC R	\$29.19
						22-900-51700	Health & Dental-MCPHD	\$29.19
						<i>Totals for STANDARD INSURANCE COMPANY (POB 64531):</i>		<i>\$3,644.98</i>
STAPLES ADVANTAGE	1/1/2017	3325751820 12/31/16	90397	1/18/2017	OFFICE SUPPLIES	22-412-56300	Office Supplies-PHC R	\$79.41
	1/1/2017	3325751839 12/31/16	90397	1/18/2017	OFFICE SUPPLIES	22-412-56300	Office Supplies-PHC R	\$12.50
	3/1/2017	3331625289A 02/25/1	91227	3/16/2017	OFFICE SUPPLIES	22-113-56300	Office Supplies-PHEP	\$13.45

**Montgomery County Hospital District**  
**Invoice Expense Allocation Report**  
Board Meeting 06/15/2017- Public Health Paid Invoices

Vendor Name	Invoice Date	Invoice No.	Payment No.	Payment Date	Invoice Description	Account No.	Account Description	Amount
	3/1/2017	3331625295A 02/25/1	91227	3/16/2017	OFFICE SUPPLIES	22-116-56300	Office Supplies-PHEP	\$8.99
	3/1/2017	3331625295B 02/25/1	91227	3/16/2017	OFFICE SUPPLIES	22-404-56300	Office Supplies-PHC M	\$37.28
							<i>Totals for STAPLES ADVANTAGE:</i>	<u>\$151.63</u>
TEXAS PUBLIC HEALTH ASSOCIATION	2/6/2017	7809 02/06/17 300.0C	2620	2/20/2017	CONFERENCE FEE/DEVIN WOMBLES	22-113-58500	Training/Related Expenses-CE-PHEP	\$300.00
							<i>Totals for TEXAS PUBLIC HEALTH ASSOCIATION:</i>	<u>\$300.00</u>
TROPHY HOUSE, LLC	3/1/2017	26294	91311	3/22/2017	MRC LOGO MEDALS	22-307-58700	Uniforms-MRC U	\$150.00
							<i>Totals for TROPHY HOUSE, LLC:</i>	<u>\$150.00</u>
UNITED AIRLINES	3/6/2017	3629 03/06/17 198.4C	2752	3/20/2017	AIR TO PREP R. LEAL	22-116-53150	Conferences - Fees, Travel, & Meals-PHEP	\$198.40
							<i>Totals for UNITED AIRLINES:</i>	<u>\$198.40</u>
VERIZON WIRELESS (POB 660108)	2/6/2017	1754 02/06/17 89.41	2625	2/20/2017	ACCT# 920161350-00001	22-113-58200	Telephones-Cellular-PHEP	\$89.41
	2/6/2017	1754 02/06/17 (22)	2639	2/20/2017	ACCT# 920161350-00001 FUND 22	22-900-58200	Telephones-Cellular-MCPHD	\$89.41
	2/6/2017	1754 02/06 (22)51.42	2642	2/20/2017	ACCT# 920161350-00001 FUND 22	22-208-58200	Telephones-Cellular-CRI D	\$51.42
	2/6/2017	1754 02/06 (22)56.11	2643	2/20/2017	ACCT# 920161350-00001 FUND 22	22-900-58200	Telephones-Cellular-MCPHD	\$56.11
	2/6/2017	1754 02/06 (22)89.41	2644	2/20/2017	ACCT# 920161350-00001 FUND 22	22-116-58200	Telephones-Cellular-PHEP	\$89.41
	2/6/2017	1754 02/06(22)89.41.	2645	2/20/2017	ACCT# 920161350-00001 FUND 22	22-307-58200	Telephones-Cellular-MRC U	\$89.41
	3/6/2017	1754 03/06/17 178.86	2755	3/20/2017	ACCT # 920161350-00001	22-307-58200	Telephones-Cellular-MRC U	\$178.86
	3/6/2017	1754 03/06/17 107.57	2755	3/20/2017	ACCT # 920161350-00001	22-900-58200	Telephones-Cellular-MCPHD	\$107.57
	3/6/2017	1754 03/06/17 94.15	2755	3/20/2017	ACCT # 920161350-00001	22-501-58200	Telephones-Cellular-1115	\$94.15
	3/6/2017	1754 03/06 178.86-1	2755	3/20/2017	ACCT # 920161350-00001	22-116-58200	Telephones-Cellular-PHEP	\$178.86
	3/6/2017	1754 03/06 178.86-2	2755	3/20/2017	ACCT # 920161350-00001	22-113-85200	Telephones-Cellular-PHEP	\$178.86
	3/6/2017	1754 03/06 102.88-2	2755	3/20/2017	ACCT # 920161350-00001	22-208-58200	Telephones-Cellular-CRI D	\$102.88
						22-116-58200	Telephones-Cellular-PHEP	\$89.41
						22-113-58200	Telephones-Cellular-PHEP	\$89.41
						22-900-58200	Telephones-Cellular-MCPHD	\$56.11
						22-208-58200	Telephones-Cellular-CRI D	\$102.84
							<i>Totals for VERIZON WIRELESS (POB 660108):</i>	<u>\$1,644.12</u>
WILLIAMS, ALICIA	3/1/2017	WIIL030117	91203	3/16/2017	MILEAGE REIMBURSEMENT 02/28/17	22-116-56200	Mileage Reimbursements-PHEP	\$44.61
							<i>Totals for WILLIAMS, ALICIA:</i>	<u>\$44.61</u>
WOMBLES, DEVIN	1/26/2017	WOM012617	90709	2/8/2017	MILEAGE REIMBURSEMENT/PHEP QUARTELY & DAYC	22-116-56200	Mileage Reimbursements-PHEP	\$170.13
						22-116-56200	Mileage Reimbursements-PHEP	\$12.41
	2/27/2017	WOM022716	91125	3/9/2017	MILEAGE REIMBURSEMENT 02/24/17-02/27/17	22-113-56200	Mileage Reimbursements-PHEP	\$15.99
	3/10/2017	WOM031017	91204	3/16/2017	MILEAGE REIMBURSEMENT 03/26/17-03/29/17	22-113-56200	Mileage Reimbursements-PHEP	\$238.07
	3/10/2017	WOM031017 \$154.5C	91204	3/16/2017	PER DIEM/GRANT REQUIREMENT 03/26/17-03/29/17	22-113-53150	Conferences - Fees, Travel, & Meals-PHEP	\$154.50
	3/15/2017	WOM031517	91317	3/22/2017	MILEAGE REIMBURSEMENT ZIKA BOOT CAMP 04/02/17	22-000-14900	Prepaid Expenses-BS	\$441.91
	3/15/2017	WOM031517 \$106.5C	91204	3/16/2017	PER DIEM/ZIKA CONFERENCE 04/02/17-04/04/17	22-000-14900	Prepaid Expenses-BS	\$106.50
						22-116-53150	Conferences - Fees, Travel, & Meals-PHEP	\$222.32
	4/28/2017	WOM042817	92118	5/3/2017	MILEAGE REIMBURSEMENT 04/21/17-04/28/17	22-113-56200	Mileage Reimbursements-PHEP	\$58.42
							<i>Totals for WOMBLES, DEVIN:</i>	<u>\$1,420.25</u>



**Montgomery County Hospital District**  
**Invoice Expense Allocation Report**  
Board Meeting 06/15/2017- Public Health Paid Invoices

<u>Vendor Name</u>	<u>Invoice Date</u>	<u>Invoice No.</u>	<u>Payment No.</u>	<u>Payment Date</u>	<u>Invoice Description</u>	<u>Account No.</u>	<u>Account Description</u>	<u>Amount</u>
MCHD Comm Paramedicine	1/31/2017	17150-1	Wire	1/31/2017	MCHD Comm Paramedicine Services	22-501-56525	Receiving from Component Unit-BS	\$70,800.00
							Totals for MCHD Comm Paramedicine:	\$70,800.00
MCHD Comm Paramedicine	2/28/2017	17276-1	Wire	2/28/2017	MCHD Comm Paramedicine Services	22-501-56525	Receiving from Component Unit-BS	\$66,900.00
							Totals for MCHD Comm Paramedicine:	\$66,900.00
MCHD Comm Paramedicine	3/31/2017	17407-1	Wire	3/31/2017	MCHD Comm Paramedicine Services	22-501-56525	Receiving from Component Unit-BS	\$88,200.00
							Totals for MCHD Comm Paramedicine:	\$88,200.00

## Account Summary

<u>Account Number</u>	<u>Description</u>	<u>Net Amount</u>
22-501-56525	Community Paramedicine-BS	\$225,900.00
22-000-14900	Prepaid Expenses-BS	\$772.41
22-113-51700	Health & Dental-PHEP	\$1,347.98
22-113-53150	Conferences - Fees, Travel, & Meals-PHEP	\$959.01
22-113-56200	Mileage Reimbursements-PHEP	\$312.48
22-113-56300	Office Supplies-PHEP	\$130.57
22-113-58200	Telephones-Cellular-PHEP	\$357.68
22-113-58500	Training/Related Expenses-CE-PHEP	\$300.00
22-115-53100	Computer Supplies/Non-Cap.-PHEP	\$872.08
22-116-51700	Health & Dental-PHEP	\$898.46
22-116-53150	Conferences - Fees, Travel, & Meals-PHEP	\$965.72
22-116-56200	Mileage Reimbursements-PHEP	\$271.82
22-116-56300	Office Supplies-PHEP	\$82.94
22-116-58200	Telephones-Cellular-PHEP	\$357.68
22-208-51700	Health & Dental-CRI D	\$674.36
22-208-53150	Conferences - Fees, Travel, & Meals-CRI D	\$1,044.54
22-208-56200	Mileage Reimbursements-CRI D	\$333.64
22-208-58200	Telephones-Cellular-CRI D	\$257.14
22-307-56200	Mileage Reimbursements-MRC U	\$53.71
22-307-58200	Telephones-Cellular-MRC U	\$357.68
22-307-58700	Uniforms-MRC U	\$150.00
22-309-51700	Health & Dental-MRC U	\$289.48
22-401-53050	Computer Software-PHC G	\$1,200.00
22-401-53900	Disposable Medical Supplies-PHC G	\$563.69
22-404-51700	Health & Dental-PHC M	\$2,654.32
22-404-53900	Disposable Medical Supplies-PHC M	\$265.26
22-404-56300	Office Supplies-PHC M	\$937.27
22-404-57100	Professional Fees-PHC M	\$165.80
22-412-51700	Health & Dental-PHC R	\$1,401.90
22-412-56300	Office Supplies-PHC R	\$275.53
22-501-51700	Health & Dental-1115	\$187.58
22-501-53150	Conferences - Fees, Travel, & Meals-1115	\$386.44
22-501-58200	Telephones-Cellular-1115	\$94.15
22-900-51700	Health & Dental-MCPHD	\$449.16
22-900-53330	Contractual Obligations- Other-MCPHD	\$6,500.00
22-900-58200	Telephones-Cellular-MCPHD	\$309.20
	<b>GRAND TOTAL:</b>	<b><u>\$252,079.68</u></b>